



View from the Bridge...01.19.12...Vol. 3 Iss. 1

Welcome to Ta-ri's e-newsletter, provided as part of our mission to be a cultural bridge in the community.

A New Year, the Year of the Dragon ...



Korean Lunar New Year

With New Year resolutions and the taste of pork and sauerkraut still fresh on our lips, we're about to celebrate another "January 1" ... the first day of the *lunar* calendar, which this year falls on January 23. According to the zodiac, this year is the Year of the Dragon. South Korea's tourism website visitkorea.or.kr explains: "Dragon, the fifth animal in the system, represents hope and courage. Though ostentatious at times, people born in the Year of the Dragon are active, adventurous, pioneering, romantic and generous. Their cheerful spirit is contagious and encouraging."

The zodiac is not as big a deal in Korean lunar new year celebrations as it is in Chinese celebrations, but it is still observed. Do you know what animal is tied to your birth year? We've included a handy chart here if you do not. For those with January and early February birthdays, you do need to make sure your birthday fell *after* the Lunar New Year that year; otherwise you are actually included with the previous year. (Remember, the common calendar is based on Rome's solar marking of the years, which is slightly different than the lunar calendar. This leads us back to the celebrating of January 1 as New Year's Day as well as the Lunar date each year.)

Zodiac Animal	Year of Birth
Rat	1924, 1936, 1948, 1960, 1972, 1984, 1996, 2008
Ox	1925, 1937, 1949, 1961, 1973, 1985, 1997, 2009
Tiger	1926, 1938, 1950, 1962, 1974, 1986, 1998, 2010
Hare	1927, 1939, 1951, 1963, 1975, 1987, 1999, 2011
Dragon	1928, 1940, 1952, 1964, 1976, 1988, 2000, 2012
Snake	1929, 1941, 1953, 1965, 1977, 1989, 2001, 2013
Horse	1930, 1942, 1954, 1966, 1978, 1990, 2002, 2014
Sheep	1931, 1943, 1955, 1967, 1979, 1991, 2003, 2015
Monkey	1932, 1944, 1956, 1968, 1980, 1992, 2004, 2016
Rooster	1933, 1945, 1957, 1969, 1981, 1993, 2005, 2017
Dog	1934, 1946, 1958, 1970, 1982, 1994, 2006, 2018
Boar	1935, 1947, 1959, 1971, 1983, 1995, 2007, 2019

Join us
SATURDAY, JANUARY 28
for Ta-ri's annual
SOLNAL PARTY!
Details on page 3.

Congrats to our New Leadership

Thanks to everyone for agreeing to serve in this way. We are thankful for your leadership!

2012 BOARD OF DIRECTORS, TA-RI

Michael Stanley, *chair*
Connie Wonder, *secretary*
Carol Merryman, *treasurer*
Lee Fritz
Destiny Long
Michelle Noel
Patrick Park
Wha Strohecker
Alyson Yost
Stacy Schroeder, *director*

2012 ADVISORY COUNCIL, TA-RI

Helen Aurand
Angela Blotzer
Sarah Bronson
Jennifer Franklin
Patty Kim
Osun Kwon
Erni Peterson
Maureen Rostad
Bongrae Seok
Juliet Shin
Cindy Vriens
Yong Yi

Have a Goodsearch Day!

Here's an easy way to raise money for Ta-ri. Just start using Yahoo! powered GoodSearch.com as your search engine and they'll donate about a penny to your favorite cause every time you do a search!

Want to make the money add up a little faster? Shop through their online shopping mall, GoodShop.com, where you can shop at more than 2,400 top online retailers (including Amazon, Macy's, J.Crew, Toys R Us, Best Buy, Gap and more) and a percentage of your purchases will go to the charity or school of your choice (Ta-ri! Ta-ri! Ta-ri!). You pay the same price as you normally would, but a donation goes to us at the same time!

You can also enroll in the GoodDining program. Eat at over 10,000 participating restaurants nationwide and you can earn up to 6% of every dollar spent on the meal as a donation for Ta-ri.

Make it really easy for yourself ... download the custom toolbar to your browser at goodsearch.com/toolbar/ta-ri. The toolbar also provides money-saving coupons and deals. It's a win-win!



Changes Ahead for Newsletter

We hope that this newsletter has been a source of good information and smiles for you in the past. Over the last year, its publication has become less frequent and therefore less effective. This was not due to lack of news but to a lack of time to create it. We are excited to announce that incoming Board member Destiny Long has agreed to serve as the newsletter's new editor and save it from oblivion. Look for her to add her own special spin to it over the next few months ... and expect more timely, regular editions in your e-mailbox. Thanks, Destiny!





Community Events and Opportunities

Send submissions for this section to director@ta-ri.org. We reserve the right to edit.



SolNal Party/ New Cumberland—January 28

2:00-4:00PM

Foundation Hall, New Cumberland Public Library
1 Benjamin Plaza, New Cumberland, PA 17070
Contact: Stacy Schroeder/717.574.3629

director@ta-ri.org

Free admission ... donations accepted
RSVP and sign up for talent show January 24

Join us to celebrate the Lunar New Year! This gathering will include delicious Korean food, activities, a talent show, and time to socialize.

All are encouraged to bring snacks and games to share. If you would like to volunteer, please let us know! We will email all registrants should wintry weather affect plans.



Dinner Meetup/Camp Hill—March 18

4:00-6:00PM

Spring Garden Restaurant
5 South 35th St, Camp Hill, PA 17011
Contact: Michael Stanley, 510.858.9998;
michael_stanley73@yahoo.com

RSVP BY MARCH 14

Join us for a casual meal; families welcome. Order food of your choice as you arrive ... it will make things easier for the staff. This a chance to meet new people and visit with friends as well. Please RSVP so we can give the restaurant an idea of the number attending.



Important Upcoming Dates ...

Mark these dates on your calendar:

SUMMER POTLUCK AND POOL PARTY

Sunday, August 19, 4-7:00PM

CHUSOK CELEBRATION

Saturday, September 29, 4-7:00PM

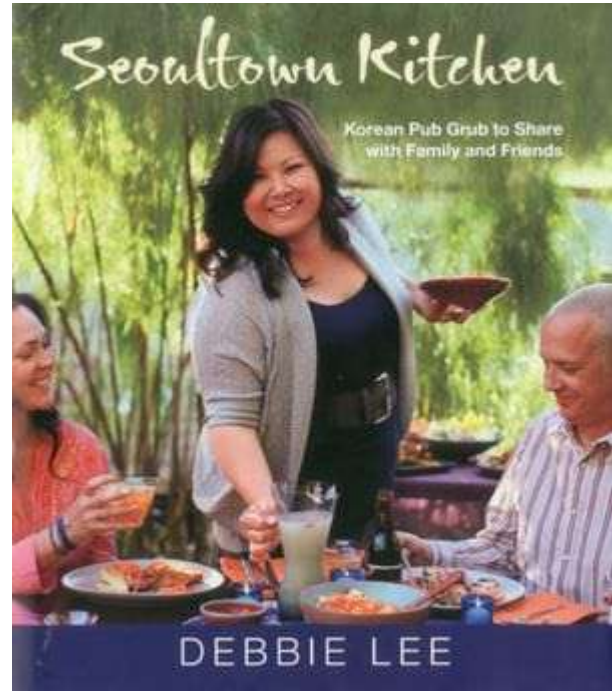
Spread the word ...

Do you know of a community event that should be included here? Let us know at contact@ta-ri.org. Thanks!

Featured Book

Seoultown Kitchen by Debbie Lee

We've said it before ... there's a movement going on, and it is called the Korean Wave. Korean cooking, both fusion or traditional, is at the forefront, as evidenced by the attention the Food Network, publishers, and others are paying (plus common good sense and taste). Forget the [Korilla scandal](#) from the Great Food Truck Race ... there's also the prize-winning [bibimbap burger](#) cooked up by former Top Chef contestant Angelo Sosa (of NYC's Social Eatz), the PBS special [The Kimchi Chronicles](#) (with recently released cookbook of the same name), and now there's Seoultown Kitchen, the lavishly photographed guide to making Korean pub grub. Author Lee made it to the top three on season five of "The Next Food Network Star." See a theme here? Hang on ... this is one wave you do not want to miss.



Get Involved!

Ta-ri owes its lifeblood to volunteers and donors ... even our staff work pro bono! We strive to use all gifts effectively and be as professional as we can. At the same time, we thrive on the informal community interactions that grow out of our events and work.

If you have appreciated Ta-ri's activities and services in the past and want to give back, we can find a place for you. Check out the list at right or give us a call and we'll see what we can do together.

Here are just a few ways we have identified:

- Volunteer your [time](#)
- Provide a financial [gift](#)
- Donate [resources](#)
- Share [ideas](#)
- Advertise as a [business supporter](#)
- Earn cash for Ta-ri while searching or shopping online via [our Goodsearch toolbar](#)

We are **deeply grateful** to our [leaders, staff, business supporters](#), and [others](#) for their investment in Ta-ri.

About Us



Ta-ri was founded in 2005 and celebrates Korean-American culture and community in the south central Pennsylvania area. Our mission is to serve as:

- ❖ community gathering "place"
- ❖ central information source
- ❖ visible presence and voice in the community

Find us at [facebook.com/view.from.the.bridge](https://www.facebook.com/view.from.the.bridge)

Ta-ri is a project of fiscal sponsor [The Foundation for Enhancing Communities](#) and as such enjoys 501©3 status as a non-profit. The official registration and financial information of The Foundation for Enhancing Communities may be obtained from the Pennsylvania Department of State by calling toll free, within Pennsylvania, 1.800.732.0999. Registration does not imply endorsement.

the
Foundation
for Enhancing Communities